

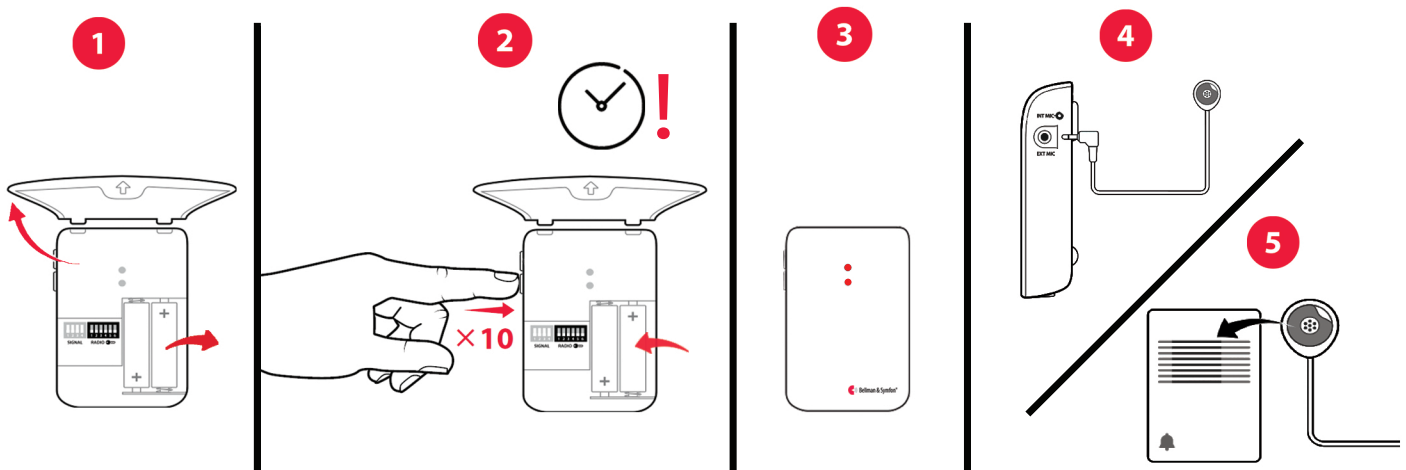
Visit Door Transmitter

Preparing the device

The first step is to prepare the BE1411 Door Transmitter and BE9199 External Microphone.

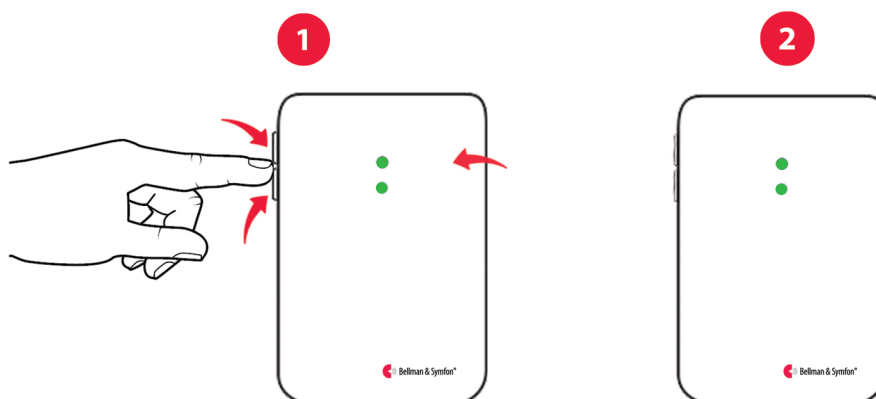
Note: It is best practice to ensure the Transmitter is paired with the Receiver before changing the programming below. To check this, press the two test buttons on the Transmitter once and it will send a signal to the Receiver.

- 1 Remove the front cover and one of the AA batteries.
- 2 Refit the AA battery. Within 2 minutes press test button number 2, 10 times in quick succession, this will disable the internal mics.
- 3 On the tenth press, check that both LEDs light up red, to confirm the internal microphones are disabled.
- 4 Fit the jack plug of the external microphone to the right hand side socket on the side of the Transmitter, marked "Ext Mic".
- 5 Place the external microphone on top of the sound source.



Activating Telecare mode

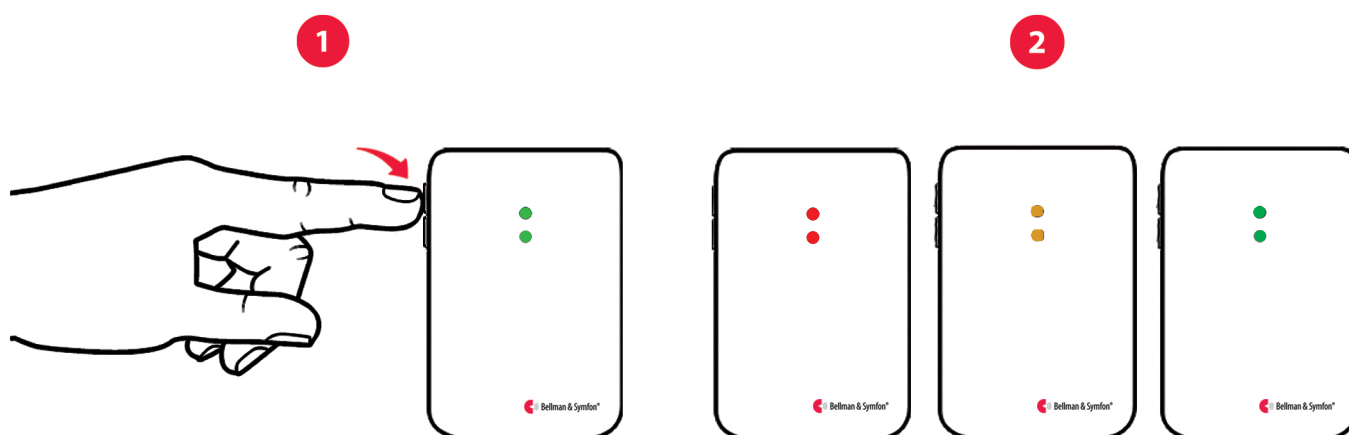
- 1 Remove one of the AA batteries again.
- 2 Press and hold test buttons 1 and 2. While holding them, reinsert the battery. Keep both buttons pressed until the LEDs on the front light up green, then release them.
- 3 The unit is now in Telecare mode. Refit the front cover.



Visit Door Transmitter

Changing the sensitivity

- 1 To change the sensitivity settings, short press test button 1 to increase the level (65dB -75dB -85dB). Short press test button 2 to decrease the level (85dB - 75dB - 65dB).
- 2 The LED colour shows the current sensitivity: Red=65dB, Amber=75dB, Green=85dB.



Deactivating Telecare mode

- 1 To deactivate the unit from Telecare mode, remove one of the AA batteries again
- 2 Press and hold test buttons 1 and 2, while holding them, reinsert the battery.
- 3 Release the buttons immediately once the battery is refitted.
- 4 The unit is now back to default mode.

